

Driscoll School Building Project



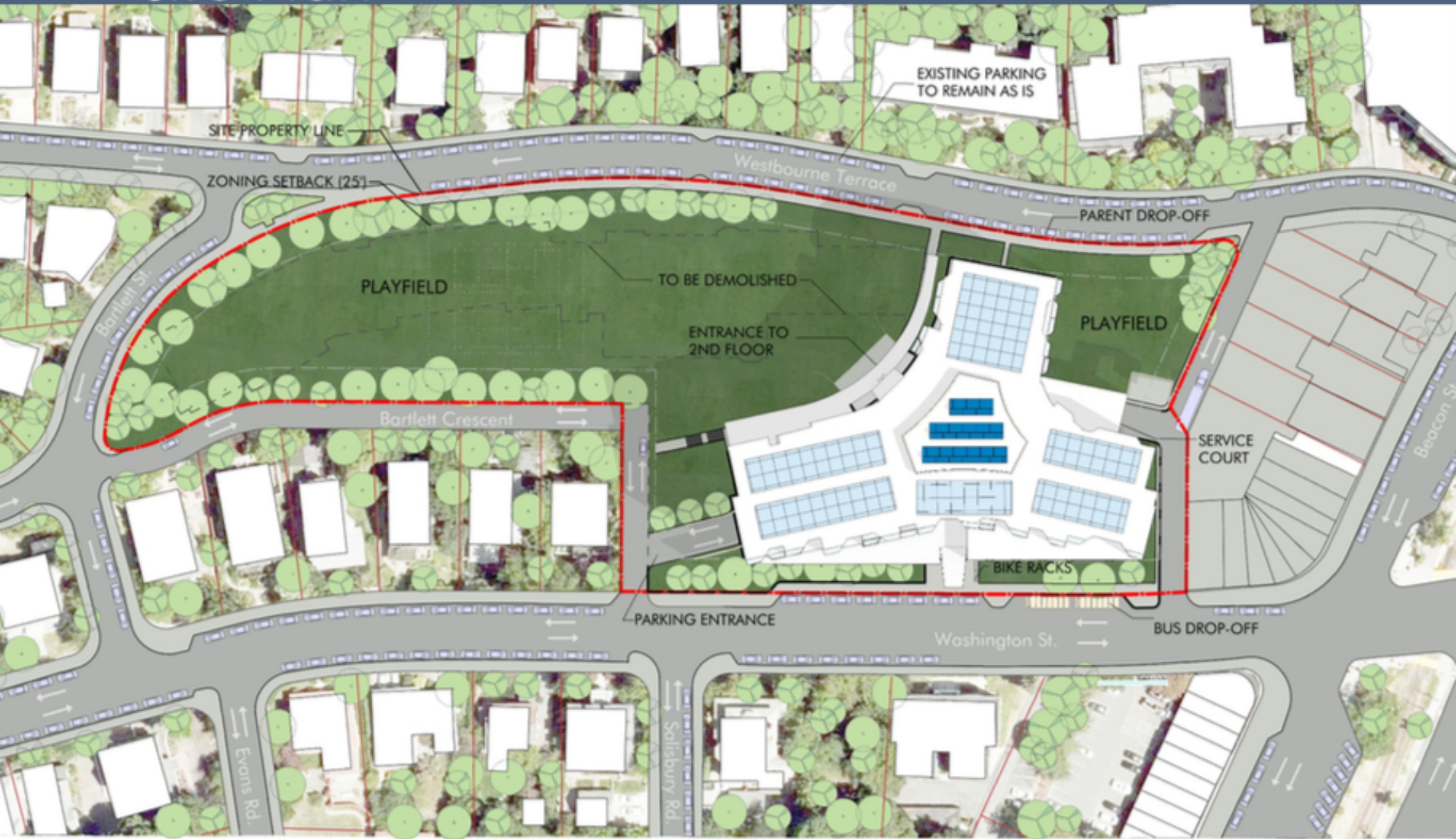
Staff Parking Plan Options

Presented to the Transportation Board - 1/28/2019

Presented to the Driscoll School Building Committee – 1/15/2019

Presented to the School Committee – 1/17/2019

Site Plan





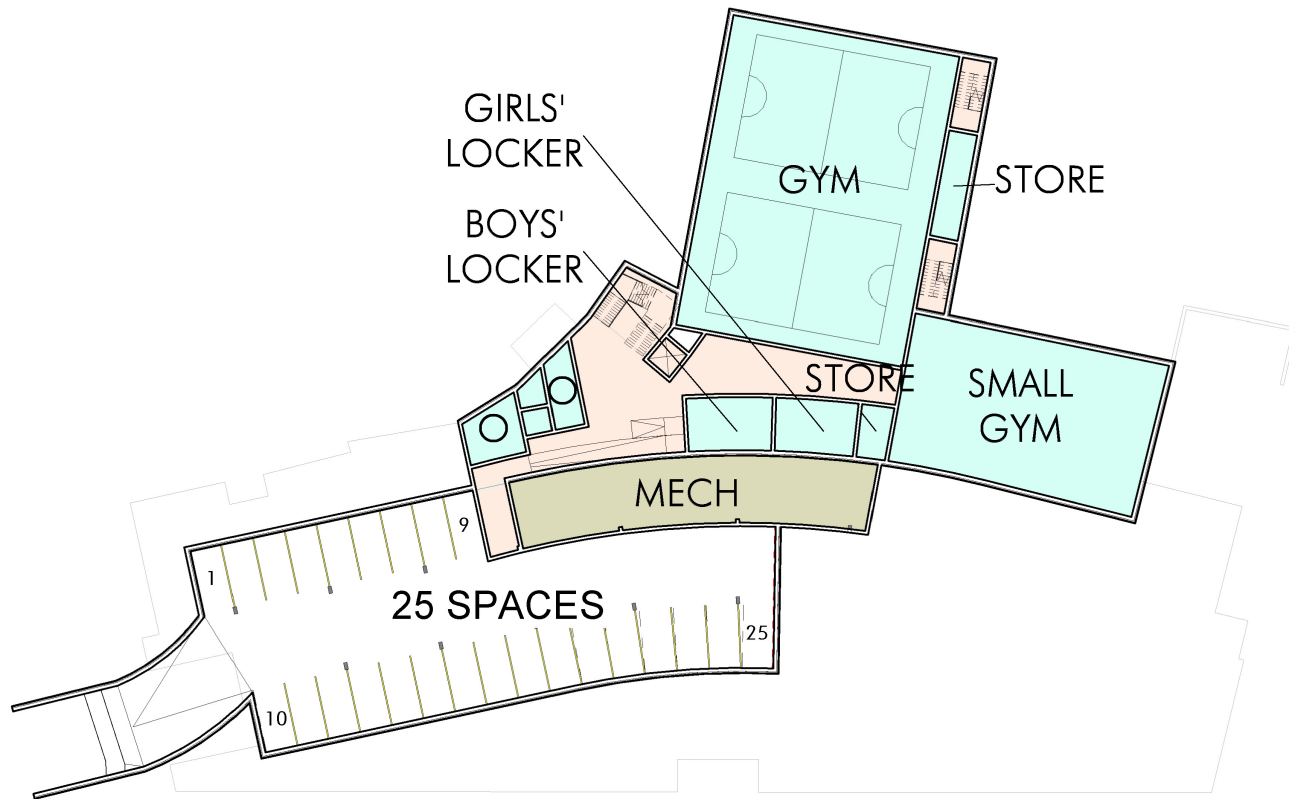
Driscoll Parking Plan Options



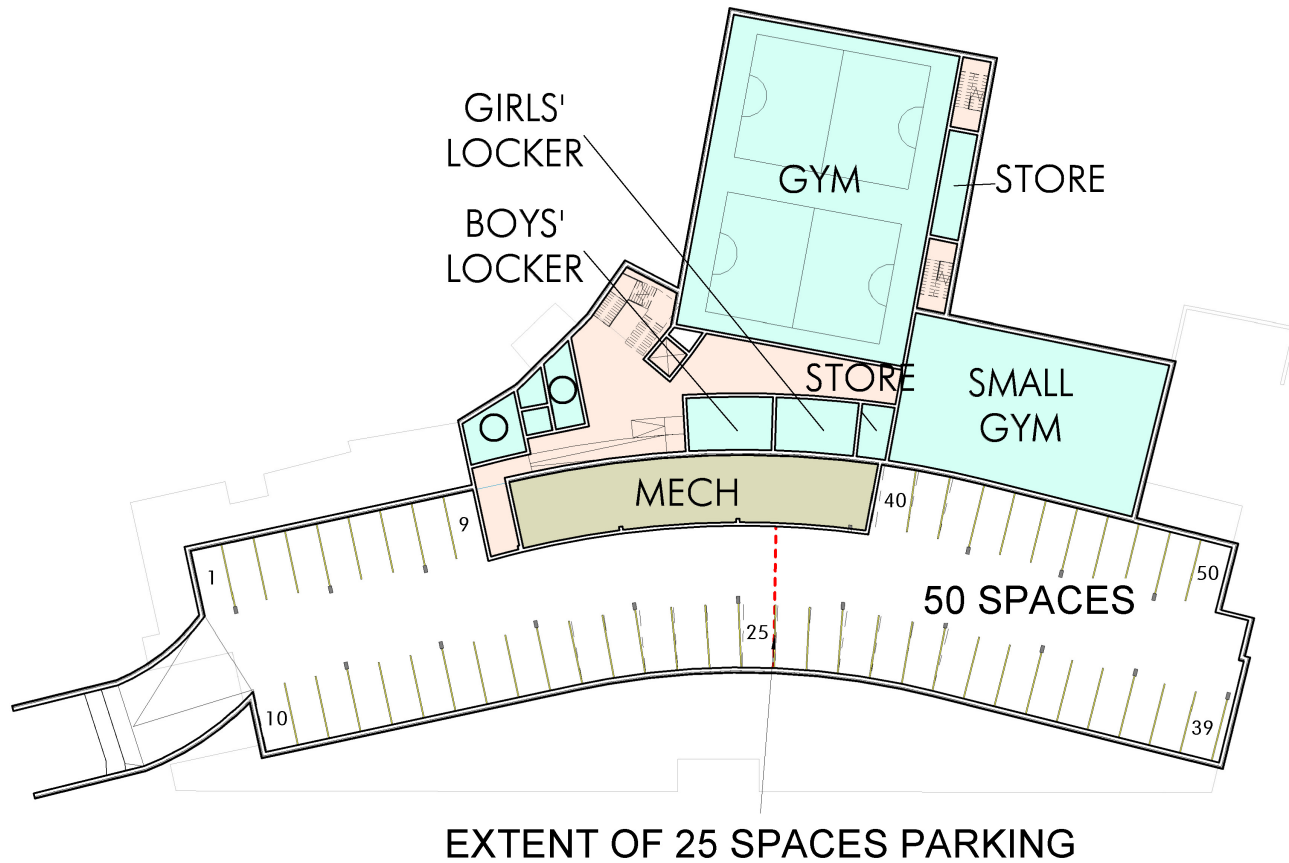
	Staff	# of Staff Parking Spaces
Current	107	105 (52 on site)
Projected	125	113 (90% of staff)

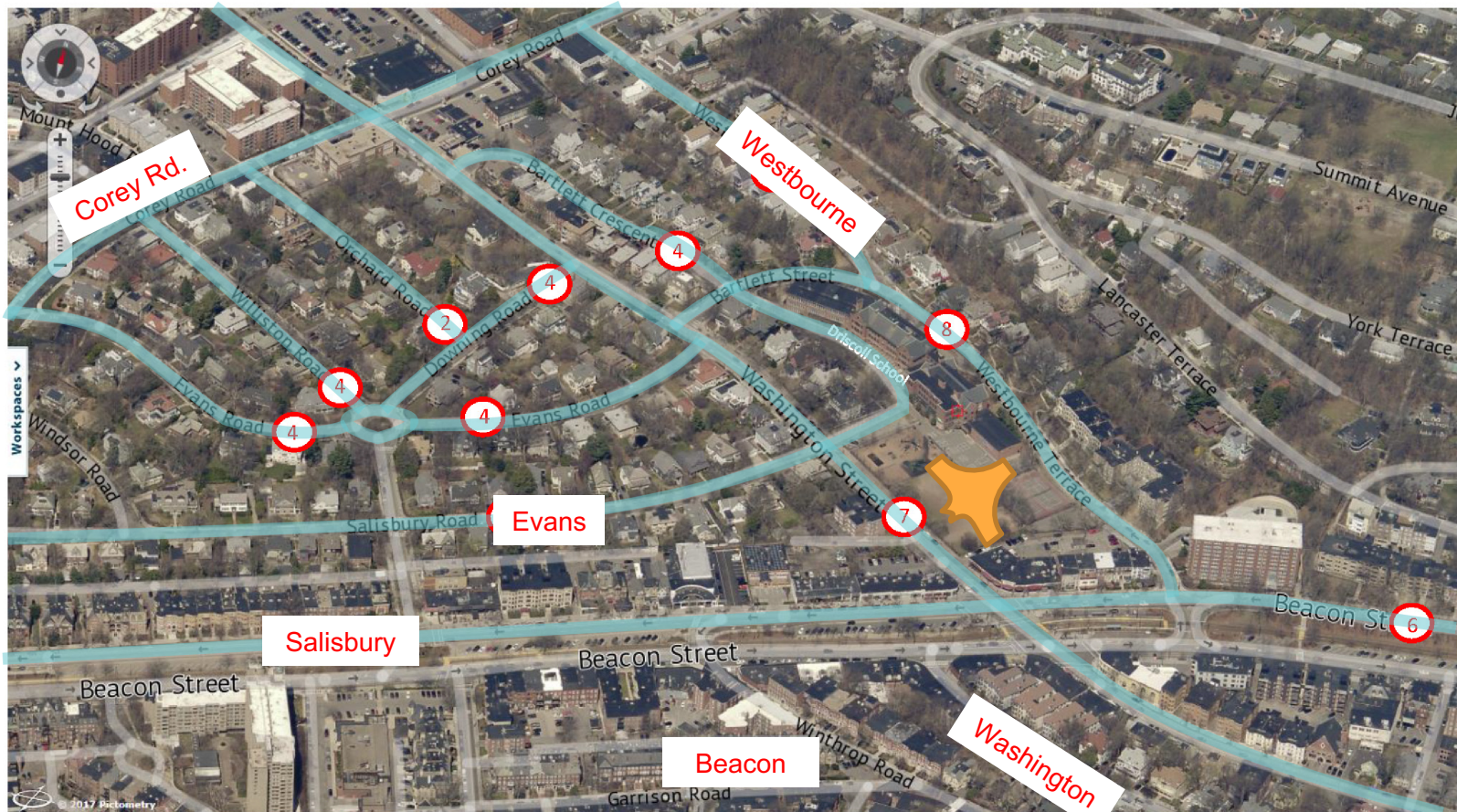
	Total # of Staff Parking Spaces Needed	# of Staff Parking Spaces on School Property (change)	# of Staff Parking Spaces on Town Streets (change)	Estimated Longest Walk for staff (mi)
Option A	113	0 (-52)	113 (+60)	0.5
Option B	113	25 (-27)	88 (+35)	0.4
Option C	113	50 (-2)	63 (+10)	0.3
Current	105	52	53	0.3

Parking Design Option – 25 Spaces



Parking Design Option – 50 Spaces





Driscoll School
7/19/2018 - Parking

Approve by
Transportation Board

52 Parking Lot Spaces
53 Approved TBoard Parking Spaces

**Currently Existing
Employee Parking Plan**

Bartlett Crescent	4
Beacon St. – Westbound	6
Downing Rd	4
Evans Rd - east of Williston	4
Evans Rd – west of Williston	4
Orchard Rd	2
Salisbury Rd - east of Corey	5
Washington St meters	7
Westbourne – north of Bartlett	5
Westbourne – south of Bartlett	8
Williston Rd – north of Evans	4



Option A - 113 spaces on Street Plus 60 spaces

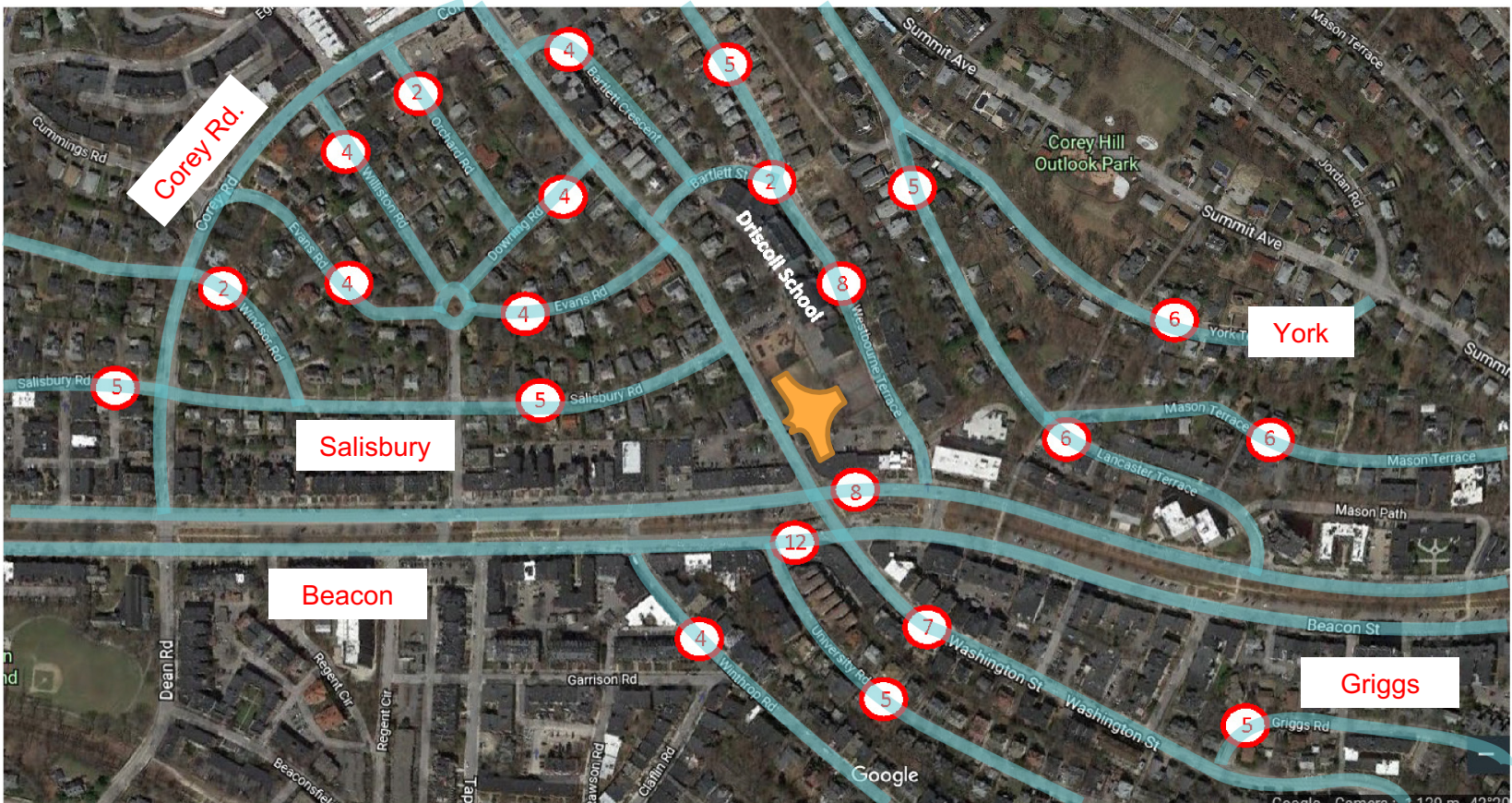


Existing Staff Parking Permits

Bartlett Cr – 4
Beacon St WB Curbside – 6
Downing Rd – 4
Evans Rd East of Williston – 4
Evans Rd West of Williston – 4
Orchard Rd – 2
Salisbury Rd East of Corey – 5
Washington St Meters – 7
Westbourne Tr North of Bartlett – 5
Westbourne Tr South of Bartlett – 8
Williston Rd North of Evans – 4

New Staff Parking Permits

Bartlett St – 2
Beacon St EB Median Meters – 12
Beacon St WB Curbside – 2 new
Griggs Rd – 5
Lancaster Tr North – 5
Lancaster Tr South – 6
Mason Tr – 6
Salisbury Rd West of Corey – 5
University Rd – 5
Windsor Rd – 2
Winthrop Rd – 4
York Tr – 6



Proposed New Driscoll 1/15/2019 - Parking Update

Option A

Review by Transportation Board

Projected staff	125
Spots needed	113
% of staff parking	90%
Spaces breakdown	
On school property	0
On street parking	113
Currently approved spaces	53

Proposed new spaces	
Bartlett Street	2
Beacon Street EB	12
Beacon Street WB	2
Griggs Road	5
Lancaster Terrace North	5
Lancaster Terrace South	6
Mason Terrace	6
Salisbury Road West	5
University Road	5
Windsor Road	2
Winthrop Road	4
York Terrace	6



Option B - 88 spaces on Street Plus 35 spaces

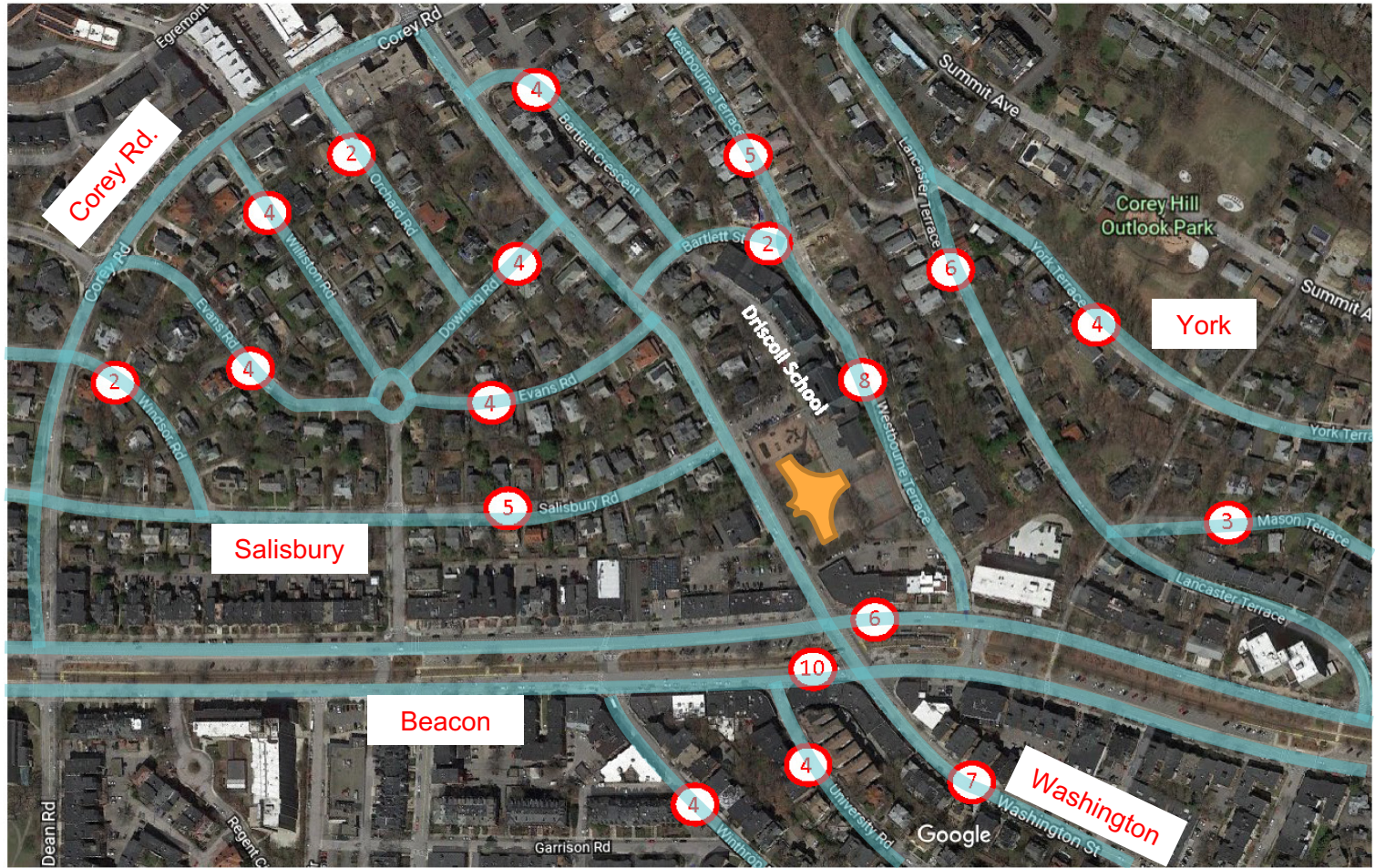


Existing Staff Parking Permits

Bartlett Cr – 4
Beacon St WB Curbside – 6
Downing Rd – 4
Evans Rd East of Williston – 4
Evans Rd West of Williston – 4
Orchard Rd – 2
Salisbury Rd East of Corey – 5
Washington St Meters – 7
Westbourne Tr North of Bartlett – 5
Westbourne Tr South of Bartlett – 8
Williston Rd North of Evans – 4

New Staff Parking Permits

Bartlett St – 2
Beacon St EB Median Meters – 10
Lancaster Tr – 6
Mason Tr – 3
University Rd – 4
Windsor Rd – 2
Winthrop Rd – 4
York Tr – 4



Proposed New Driscoll

1/15/2019 - Parking Update

Option B

Recommended by
School Committee

Projected staff	125
Spots needed	113
% of staff parking	90%
Spaces breakdown	
On school property	25
On street parking	88
Currently approved spaces	53

Proposed new spaces	
Bartlett Street	2
Beacon Street EB	10
Lancaster Terrace	6
Mason Terrace	3
University Road	4
Windsor Road	2
Winthrop Road	4
York Terrace	4



Option C - 63 spaces on street Adding 10 spaces on street

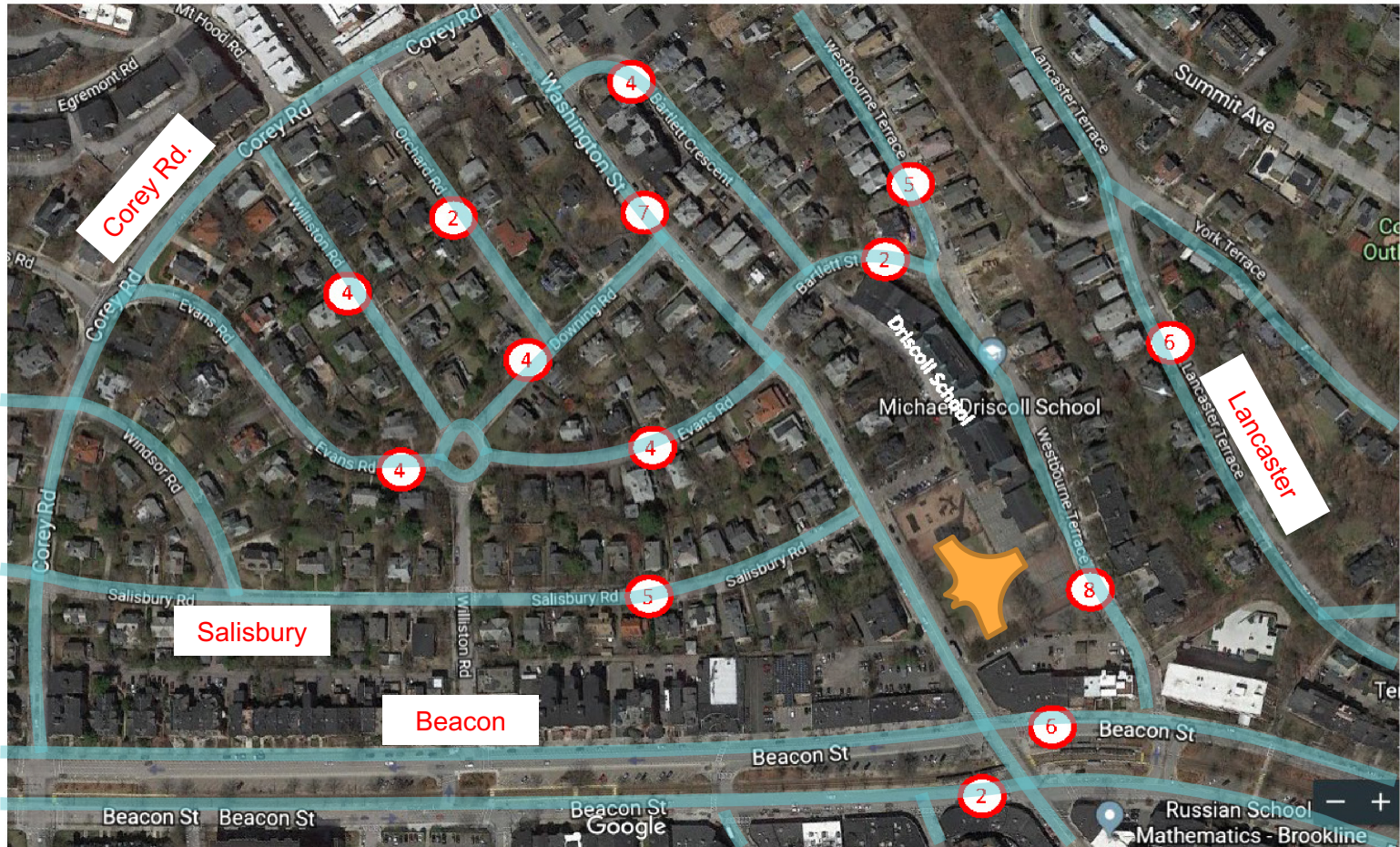


Existing Staff Parking Permits

- Bartlett Cr – 4
- Beacon St WB Curbside – 6
- Downing Rd – 4
- Evans Rd East of Williston – 4
- Evans Rd West of Williston – 4
- Orchard Rd – 2
- Salisbury Rd East of Corey – 5
- Washington St Meters – 7
- Westbourne Tr North of Bartlett – 5
- Westbourne Tr South of Bartlett – 8
- Williston Rd North of Evans – 4

New Staff Parking Permits

- Bartlett St – 2
- Beacon St EB Median Meters – 2
- Lancaster Tr – 6



Proposed New Driscoll

1/15/2019 - Parking Update

Option C

Review by Transportation Board

Projected staff	125	Proposed new spaces	
Spots needed	113	Bartlett Street	2
% of staff parking	90%	Beacon Street EB	2
		Lancaster Terrace	6
Spaces breakdown			
On school property	50		
On street parking	63		
Currently approved spaces	53		



Driscoll Parking Plan Options



	Design Presented at Town Meeting – December 2018			Updated and Refined Design – January 2019		
	# of Below Grade Parking Spaces	Total Project Cost Estimate	Marginal Cost	# of Below Grade Parking Spaces	Schematic Design – Revised Project Cost Estimate	Marginal Cost
Option A	0 spaces	\$93-97 M	\$0	0	\$93 – 97 M	\$ 0
Option B	N/A	N/A	N/A	25 spaces	\$96.3 – 100.3 M	\$3.3 M
Option C	50 spaces	\$101-105 M	\$8 M	50 spaces	\$99.1– 103.1 M	\$6.1 M

	Total # of Staff Parking Spaces Needed	# of Staff Parking Spaces on School Property	# of Staff Parking Spaces on Town Streets	Estimated Longest Walk for staff (mi)
Option A	113	0	113 (+60)	0.5
Option B	113	25	88 (+35)	0.4
Option C	113	50	63 (+10)	0.3
Current	105	52	53	0.3

PSB Staff Parking Plans

	<u>Total # of Staff Parking Spaces</u>	<u># of Staff Parking Spaces on School Property</u>	<u># of Staff Parking Spaces on Town Streets</u>	<u>Estimated Longest Walk for staff (mi)</u>	<u>% of Staff Parking On School Property</u>	<u>% of Staff Parking on Town Streets</u>
Brookline High	225	25	200	0.6	11%	89%
Baker	132	64	68	0.5	48%	52%
Coolidge Corner	175	65	110	0.5	37%	63%
Driscoll	105	52	53	0.3	50%	50%
Heath	68	32	36	0.3	47%	53%
Lawrence	102	0	102	0.3	0%	100%
Lincoln	102	69	33	0.2	68%	32%
Pierce	135	85*	50	0.2	63%	37%
Runkle	120	0	120	0.3	0%	100%
BEEP @ Lynch	26	20	6	N/A	77%	23%
Driscoll - Option A	113	0	113 (+60)	0.5	0%	100%
Driscoll - Option B	113	25	88 (+35)	0.4	22%	78%
Driscoll - Option C	113	50	63 (+10)	0.3	44%	56%

On-site Parking at PSB Schools

	<u>Staff</u>	<u>Families</u>	<u>Visitors</u>
Baker	On Site + Street	None	Limited to Circle
Coolidge Corner	On Site + Street	None	Limited to Circle
Driscoll	On Site + Street	None	None
Heath	On Site + Street	None	Limited to small off street lot
Lawrence	Street	None	None
Lincoln	On Site + Street	None	Limited to Circle
Pierce	On Site + Street	None	None
Runkle	Street	None	None
Brookline High	On Site + Street	None	None
BEEP	On Site + Street	None	None
Baldwin (Proposed)	On Site + Street	15 spaces available on-site during drop off	15 spaces On-Site